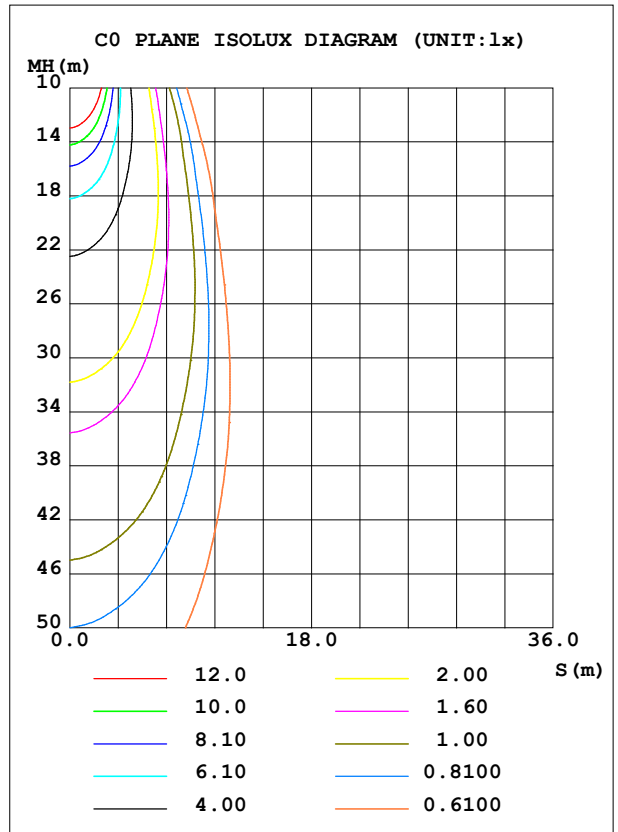
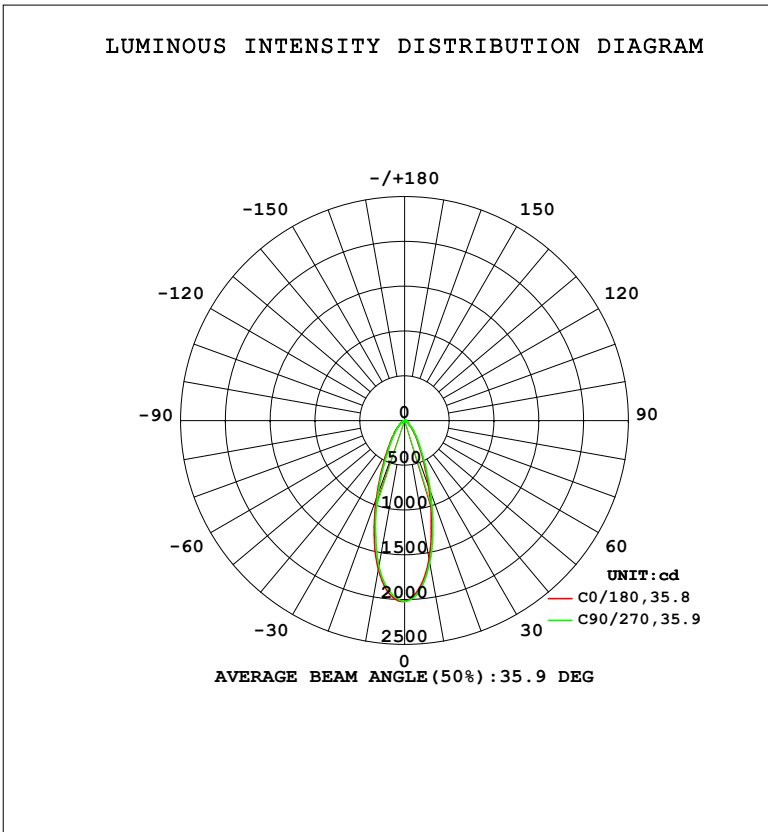


LUMINAIRE PHOTOMETRIC TEST REPORT

Test:U:120.20V I:0.0964A P:11.403W PF:0.9837 Freq:59.98Hz		
UTHDi:0.00% ITHDi:0.00% KDisp:0 Lamp Flux:1083.11x1 lm		
NAME: LED-2-S11W-5CCT-WH-EY	TYPE:	WEIGHT:
SPEC.: 4000K 90	DIM.:	SERIAL No.:
MFR.: LTS	SUR.:	Shielding Angle:

DATA OF LAMP		PHOTOMETRIC DATA				Eff: 94.99 lm/W
MODEL		I _{max} (cd)	2023	S/MH (C0/180)	0.62	
NOMINAL POWER (W)	11	LOR (%)	100.0	S/MH (C90/270)	0.59	
RATED VOLTAGE (V)	120	TOTAL FLUX (lm)	1083.1	η UP, DN (C0-180)	0.0, 49.7	
NOMINAL FLUX (lm)	1083.11	CIE CLASS	DIRECT	η UP, DN (C180-360)	0.0, 50.3	
LAMPS INSIDE	1	η up (%)	0.0	CIBSE SHR NOM	0.50	
TEST VOLTAGE (V)	120	η down (%)	100.0	CIBSE SHR MAX	0.60	



C Range: 0 - 360DEG
 C Interval: 22.5DEG
 Test Speed: HIGH
 Temperature: 24.3 °C
 Operators:
 Test Date: 2024-03-16

γ Range: 0 - 90DEG
 γ Interval: 1.0DEG
 Test System: EVERFINE GO-SPEX500_V1 SYSTEM V2.00.460
 Humidity: 65.0%
 Test Distance: 3.080m [K=1.0000]
 Remarks:

ZONAL FLUX DIAGRAM

ZONAL FLUX DIAGRAM:

γ	C0	C45	C90	C135	C180	C225	C270	C315	γ	Φ zone	Φ total	%lum,lamp
10	1572	1591	1614	1673	1690	1654	1652	1614	0- 10	173.7	173.7	16,16
20	788.3	815.1	848.3	908.6	928.3	892.8	875.0	860.4	10- 20	341.7	515.4	47.6,47.6
30	324.6	337.8	357.0	383.5	389.4	365.1	351.6	355.3	20- 30	259.1	774.5	71.5,71.5
40	152.6	160.8	169.8	175.4	174.9	165.8	158.1	158.8	30- 40	152.6	927.1	85.6,85.6
50	60.68	61.20	62.07	67.23	71.39	68.76	64.80	64.62	40- 50	86.28	1013	93.6,93.6
60	27.96	29.45	30.60	31.61	31.02	30.34	29.02	27.94	50- 60	40.87	1054	97.3,97.3
70	9.657	10.40	11.05	11.14	9.623	11.23	10.74	10.21	60- 70	19.35	1074	99.1,99.1
80	3.625	4.333	5.533	4.398	3.888	4.562	5.541	4.766	70- 80	7.851	1081	99.8,99.8
90	0.0845	0.0835	0.0953	0.0811	0.0672	0.0610	0.0746	0.0618	80- 90	1.651	1083	100,100
100									90-100			
110									100-110			
120									110-120			
130									120-130			
140									130-140			
150									140-150			
160									150-160			
170									160-170			
180									170-180			
DEG	LUMINOUS INTENSITY:cd									UNIT:lm		

Conical surface Flux(90deg): 978.32 lm

%lum = 90.3%

%lamp = 90.3%

Conical surface Flux(130deg): 1066.2 lm

%lum = 98.4%

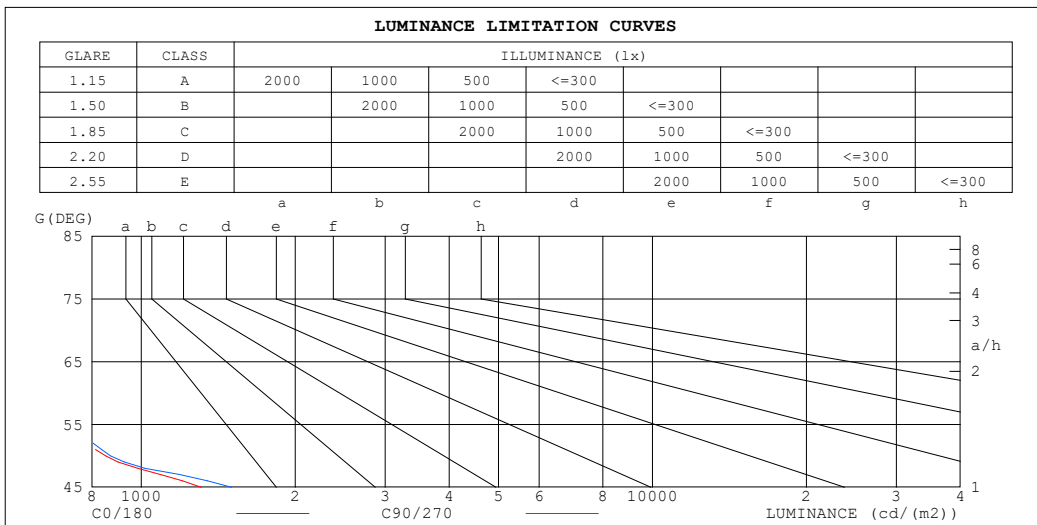
%lamp = 98.4%

C Range: 0 - 360DEG
 C Interval: 22.5DEG
 Test Speed: HIGH
 Temperature:24.3°C
 Operators:
 Test Date:2024-03-16

γ Range: 0 - 90DEG
 γ Interval: 1.0DEG
 Test System:EVERFINE GO-SPEX500_V1 SYSTEM V2.00.460
 Humidity:65.0%
 Test Distance:3.080m [K=1.0000]
 Remarks:

LUMINANCE LIMITATION CURVES

Test:U:120.20V I:0.0964A P:11.403W PF:0.9837 Freq:59.98Hz UTHDi:0.00% ITHDi:0.00% KDisp:0 Lamp Flux:1083.11x1 lm		
NAME: LED-2-S11W-5CCT-WH-EY	TYPE:	WEIGHT:
SPEC.: 4000K 90	DIM.:	SERIAL No.:
MFR.: LTS	SUR.:	Shielding Angle:



LUMINANCE cd/(m2)		
G (DEG)	C0/180	C90/270
85	15	242
80	188	287
75	250	272
70	255	291
65	386	437
60	504	551
55	666	707
50	851	870
45	1309	1502

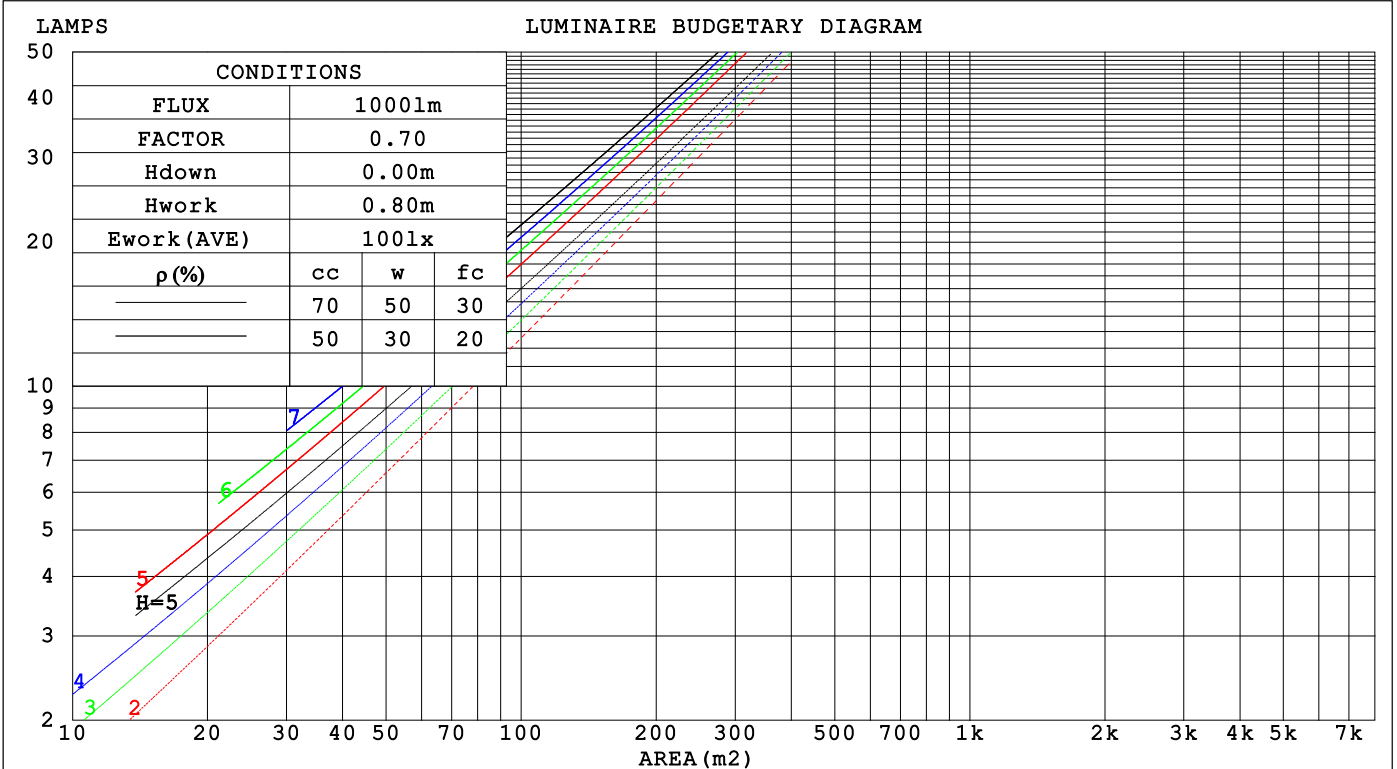
C Range: 0 - 360DEG
 C Interval: 22.5DEG
 Test Speed: HIGH
 Temperature: 24.3 °C
 Operators:
 Test Date: 2024-03-16

γ Range: 0 - 90DEG
 γ Interval: 1.0DEG
 Test System: EVERFINE GO-SPEX500_V1 SYSTEM V2.00.460
 Humidity: 65.0%
 Test Distance: 3.080m [K=1.0000]
 Remarks:

CU AND LUMINAIRE BUDGETARY ESTIMATE DIAGRAM

Test:U:120.20V I:0.0964A P:11.403W PF:0.9837 Freq:59.98Hz		
UTHdi:0.00% ITHdi:0.00% KDisp:0 Lamp Flux:1083.11x1 lm		
NAME: LED-2-S11W-5CCT-WH-EY	TYPE:	WEIGHT:
SPEC.: 4000K 90	DIM.:	SERIAL No.:
MFR.: LTS	SUR.:	Shielding Angle:

ρcc	80%			70%			50%			30%			10%			0
ρw	50%	30%	10%	50%	30%	10%	50%	30%	10%	50%	30%	10%	50%	30%	10%	0
ρfc	20%			20%			20%			20%			20%			0
RCR	RCR:Room Cavity Ratio															
	Coefficients of Utilization(CU)															
0.0	1.19	1.19	1.19	1.16	1.16	1.16	1.11	1.11	1.11	1.06	1.06	1.06	1.02	1.02	1.02	1.00
1.0	1.10	1.08	1.06	1.08	1.06	1.04	1.04	1.02	1.01	1.01	.99	.98	.97	.96	.95	.93
2.0	1.03	.99	.95	1.01	.97	.94	.98	.95	.92	.95	.92	.90	.92	.90	.88	.86
3.0	.96	.91	.87	.94	.90	.86	.92	.88	.85	.89	.86	.83	.87	.84	.82	.80
4.0	.90	.84	.80	.88	.83	.79	.86	.82	.78	.84	.81	.77	.82	.79	.77	.75
5.0	.84	.78	.74	.83	.78	.74	.81	.77	.73	.80	.76	.72	.78	.75	.72	.70
6.0	.79	.73	.69	.79	.73	.69	.77	.72	.68	.76	.71	.68	.74	.71	.68	.66
7.0	.75	.69	.65	.74	.69	.65	.73	.68	.64	.72	.67	.64	.71	.67	.64	.62
8.0	.71	.65	.61	.71	.65	.61	.69	.64	.61	.68	.64	.61	.67	.63	.60	.59
9.0	.68	.62	.58	.67	.62	.58	.66	.61	.58	.65	.61	.57	.64	.60	.57	.56
10.0	.64	.59	.55	.64	.59	.55	.63	.58	.55	.62	.58	.55	.62	.58	.55	.53



C Range: 0 - 360DEG
 C Interval: 22.5DEG
 Test Speed: HIGH
 Temperature:24.3 °C
 Operators:
 Test Date:2024-03-16

γ Range: 0 - 90DEG
 γ Interval: 1.0DEG
 Test System:EVERFINE GO-SPEX500_V1 SYSTEM V2.00.460
 Humidity:65.0%
 Test Distance:3.080m [K=1.0000]
 Remarks:

WEC AND CCEC

Test:U:120.20V I:0.0964A P:11.403W PF:0.9837 Freq:59.98Hz		
UTHDi:0.00% ITHDi:0.00% KDisp:0 Lamp Flux:1083.11x1 lm		
NAME: LED-2-S11W-5CCT-WH-EY	TYPE:	WEIGHT:
SPEC.: 4000K 90	DIM.:	SERIAL No.:
MFR.: LTS	SUR.:	Shielding Angle:

ρ_{CC}	80%			70%			50%			30%			10%			0
ρ_w	50%	30%	10%	50%	30%	10%	50%	30%	10%	50%	30%	10%	50%	30%	10%	0
ρ_{fc}	20%			20%			20%			20%			20%			0
RCR	RCR:Room Cavity Ratio						Wall Exitance Coefficients(WEC)									
0.0																
1.0	.183	.104	.033	.176	.100	.032	.163	.094	.030	.152	.088	.028	.141	.082	.026	
2.0	.174	.096	.029	.169	.093	.029	.158	.088	.027	.148	.083	.026	.139	.079	.025	
3.0	.165	.088	.026	.160	.086	.026	.151	.082	.025	.143	.078	.024	.135	.075	.023	
4.0	.156	.081	.024	.152	.079	.023	.144	.076	.023	.137	.073	.022	.130	.071	.022	
5.0	.148	.075	.022	.144	.074	.022	.137	.071	.021	.131	.069	.021	.125	.067	.020	
6.0	.140	.070	.020	.137	.069	.020	.131	.067	.020	.125	.065	.019	.120	.063	.019	
7.0	.133	.066	.019	.130	.065	.018	.125	.063	.018	.120	.062	.018	.115	.060	.018	
8.0	.127	.062	.017	.124	.061	.017	.119	.060	.017	.115	.058	.017	.111	.057	.017	
9.0	.121	.058	.016	.118	.058	.016	.114	.057	.016	.110	.055	.016	.107	.054	.016	
10.0	.115	.055	.015	.113	.055	.015	.110	.054	.015	.106	.053	.015	.103	.052	.015	

ρ_{CC}	80%			70%			50%			30%			10%			0
ρ_w	50%	30%	10%	50%	30%	10%	50%	30%	10%	50%	30%	10%	50%	30%	10%	0
ρ_{fc}	20%			20%			20%			20%			20%			0
RCR	RCR:Room Cavity Ratio						Ceiling Cavity Exitance Coefficients(CCEC)									
0.0	.190	.190	.190	.163	.163	.163	.111	.111	.111	.064	.064	.064	.020	.020	.020	
1.0	.172	.157	.144	.147	.135	.124	.100	.093	.086	.058	.054	.050	.019	.017	.016	
2.0	.157	.132	.112	.134	.114	.097	.092	.079	.068	.053	.046	.040	.017	.015	.013	
3.0	.144	.114	.089	.124	.098	.077	.085	.068	.054	.049	.040	.032	.016	.013	.010	
4.0	.134	.099	.072	.115	.085	.063	.079	.060	.044	.046	.035	.026	.015	.011	.009	
5.0	.125	.087	.059	.107	.076	.052	.074	.053	.037	.043	.031	.022	.014	.010	.007	
6.0	.117	.078	.050	.101	.068	.043	.070	.047	.031	.040	.028	.018	.013	.009	.006	
7.0	.111	.070	.042	.095	.061	.037	.066	.043	.026	.038	.025	.016	.012	.008	.005	
8.0	.105	.064	.036	.090	.056	.032	.062	.039	.022	.036	.023	.013	.012	.008	.004	
9.0	.099	.059	.031	.085	.051	.027	.059	.036	.020	.035	.021	.012	.011	.007	.004	
10.0	.094	.054	.028	.081	.047	.024	.056	.033	.017	.033	.020	.010	.011	.006	.003	

C Range: 0 - 360DEG
 C Interval: 22.5DEG
 Test Speed: HIGH
 Temperature:24.3°C
 Operators:
 Test Date:2024-03-16

γ Range: 0 - 90DEG
 γ Interval: 1.0DEG
 Test System:EVERFINE GO-SPEX500_V1 SYSTEM V2.00.460
 Humidity:65.0%
 Test Distance:3.080m [K=1.0000]
 Remarks:

UGR(Unified Glare Rating) Table

Test:U:120.20V I:0.0964A P:11.403W PF:0.9837 Freq:59.98Hz UTHDi:0.00% ITHDi:0.00% KDisp:0 Lamp Flux:1083.11x1 lm		
NAME: LED-2-S11W-5CCT-WH-EY	TYPE:	WEIGHT:
SPEC.: 4000K 90	DIM.:	SERIAL No.:
MFR.: LTS	SUR.:	Shielding Angle:

ceiling/cavity	0.7	0.7	0.5	0.5	0.3	0.7	0.7	0.5	0.5	0.3
walls	0.5	0.3	0.5	0.3	0.3	0.5	0.3	0.5	0.3	0.3
working plane	0.2	0.2	0.2	0.2	0.2	0.2	0.2	0.2	0.2	0.2

Room dimensions	Viewed crosswise					Viewed endwise				
x = 2H y = 2H	8.0	9.0	8.3	9.2	9.3	8.4	9.3	8.6	9.5	9.7
3H	8.2	9.0	8.4	9.2	9.4	8.5	9.4	8.8	9.6	9.8
4H	8.2	9.0	8.5	9.3	9.5	8.6	9.4	8.9	9.6	9.9
6H	8.2	9.0	8.5	9.2	9.5	8.6	9.4	8.9	9.7	9.9
8H	8.2	8.9	8.5	9.2	9.5	8.7	9.4	9.0	9.7	9.9
12H	8.2	8.9	8.5	9.1	9.4	8.7	9.4	9.0	9.7	9.9
4H 2H	8.1	8.9	8.4	9.1	9.4	8.4	9.2	8.7	9.4	9.7
3H	8.3	9.0	8.6	9.3	9.5	8.6	9.3	8.9	9.6	9.9
4H	8.4	9.0	8.7	9.3	9.6	8.7	9.4	9.1	9.7	10.0
6H	8.4	9.0	8.8	9.4	9.7	8.9	9.4	9.2	9.8	10.1
8H	8.4	9.0	8.8	9.3	9.7	8.9	9.5	9.3	9.8	10.2
12H	8.4	8.9	8.8	9.2	9.6	8.9	9.4	9.4	9.8	10.2
8H 4H	8.4	8.9	8.7	9.2	9.6	8.7	9.2	9.1	9.6	9.9
6H	8.5	8.9	8.9	9.3	9.7	8.9	9.3	9.3	9.7	10.1
8H	8.5	8.8	8.9	9.3	9.7	9.0	9.4	9.4	9.8	10.2
12H	8.4	8.7	8.9	9.2	9.6	9.0	9.4	9.5	9.8	10.3
12H 4H	8.3	8.8	8.7	9.2	9.6	8.7	9.1	9.1	9.5	9.9
6H	8.4	8.8	8.9	9.2	9.7	8.9	9.3	9.3	9.7	10.1
8H	8.4	8.8	8.9	9.2	9.7	9.0	9.3	9.4	9.7	10.2

Variations with the observer position at spacings(CIE Pub.117):		
S = 1.0H	+ 1.3 / - 2.1	+ 1.2 / - 1.9
1.5H	+ 1.7 / - 1.4	+ 2.0 / - 1.5
2.0H	+ 2.6 / - 1.7	+ 3.0 / - 1.5

CIE Pub.117, 1083 lm Total Lamp Luminous Flux Correct (8log(F/F0) = 0.3)
 Area: 0.111111 m2

C Range: 0 - 360DEG
 C Interval: 22.5DEG
 Test Speed: HIGH
 Temperature:24.3°C
 Operators:
 Test Date:2024-03-16

γ Range: 0 - 90DEG
 γ Interval: 1.0DEG
 Test System:EVERFINE GO-SPEX500_V1 SYSTEM V2.00.460
 Humidity:65.0%
 Test Distance:3.080m [K=1.0000]
 Remarks:

UTILIZATION FACTORS TABLE

Test:U:120.20V I:0.0964A P:11.403W PF:0.9837 Freq:59.98Hz UTHDi:0.00% ITHDi:0.00% KDisp:0 Lamp Flux:1083.11x1 lm		
NAME: LED-2-S11W-5CCT-WH-EY	TYPE:	WEIGHT:
SPEC.: 4000K 90	DIM.:	SERIAL No.:
MFR.: LTS	SUR.:	Shielding Angle:

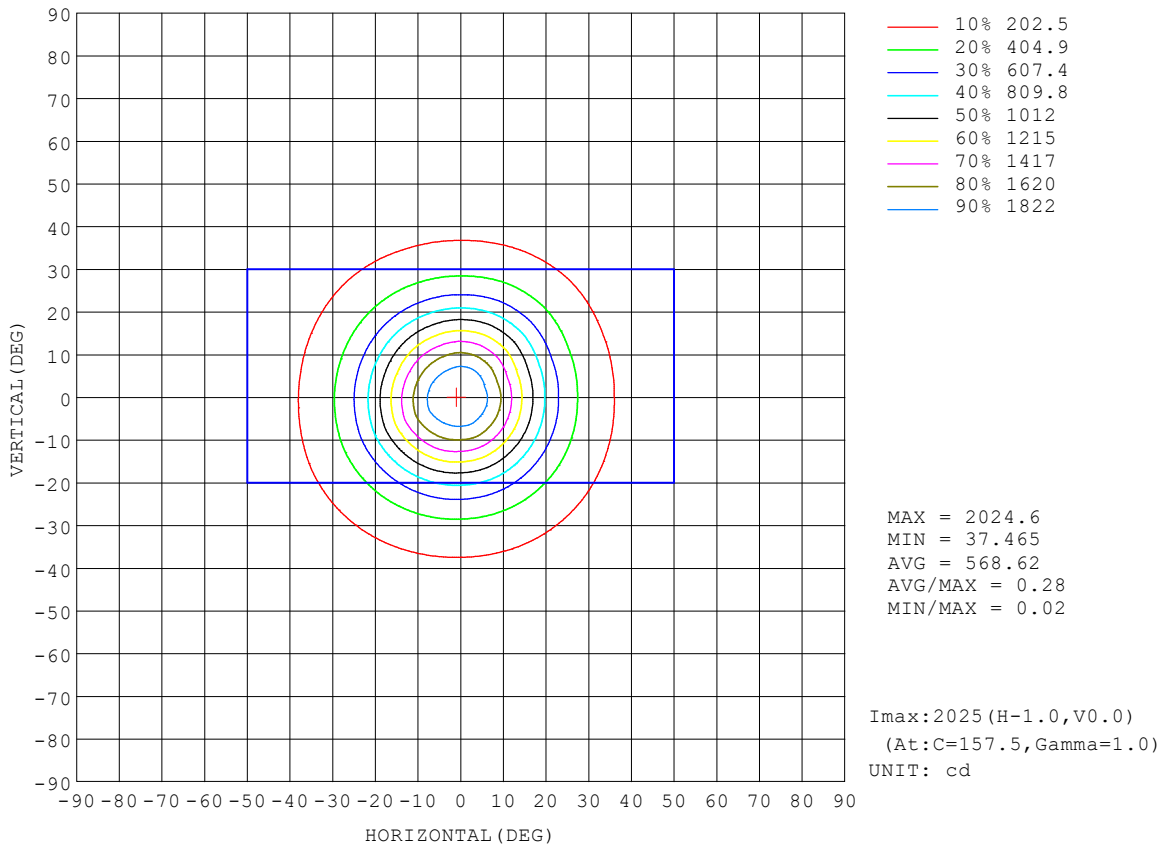
REFLECTANCE										
Ceiling	0.8	0.8	0.8	0.7	0.7	0.7	0.5	0.5	0.5	0
Walls	0.7	0.5	0.3	0.7	0.5	0.3	0.7	0.5	0.3	0
Working plane	0.2	0.2	0.2	0.2	0.2	0.2	0.2	0.2	0.2	0
ROOM INDEX	UTILIZATION FACTORS (PERCENT) $k(RI) \times RCR = 5$									
$k = 0.60$	82	75	71	82	75	71	81	75	71	67
0.80	91	84	79	90	83	79	89	83	79	75
1.00	96	89	85	95	89	85	93	89	84	80
1.25	100	94	90	99	94	90	97	93	89	85
1.50	103	98	94	102	97	94	100	96	93	88
2.00	107	102	98	105	101	98	103	99	96	91
2.50	109	104	101	107	103	100	104	101	98	92
3.00	111	107	104	109	105	103	105	103	100	94
4.00	113	110	107	111	108	106	107	105	103	96
5.00	114	112	109	112	110	108	108	106	105	97
ROOM INDEX	UF(total)									Direct
According to DIN EN 13032-2 2004			Suspended				SHRNOM = 1.25			

C Range: 0 - 360DEG
 C Interval: 22.5DEG
 Test Speed: HIGH
 Temperature:24.3°C
 Operators:
 Test Date:2024-03-16

γ Range: 0 - 90DEG
 γ Interval: 1.0DEG
 Test System:EVERFINE GO-SPEX500_V1 SYSTEM V2.00.460
 Humidity:65.0%
 Test Distance:3.080m [K=1.0000]
 Remarks:

ISOCANDELA DIAGRAM

Test:U:120.20V I:0.0964A P:11.403W PF:0.9837 Freq:59.98Hz UTHDi:0.00% ITHDi:0.00% KDisp:0 Lamp Flux:1083.11x1 lm		
NAME: LED-2-S11W-5CCT-WH-EY	TYPE:	WEIGHT:
SPEC.: 4000K 90	DIM.:	SERIAL No.:
MFR.: LTS	SUR.:	Shielding Angle:

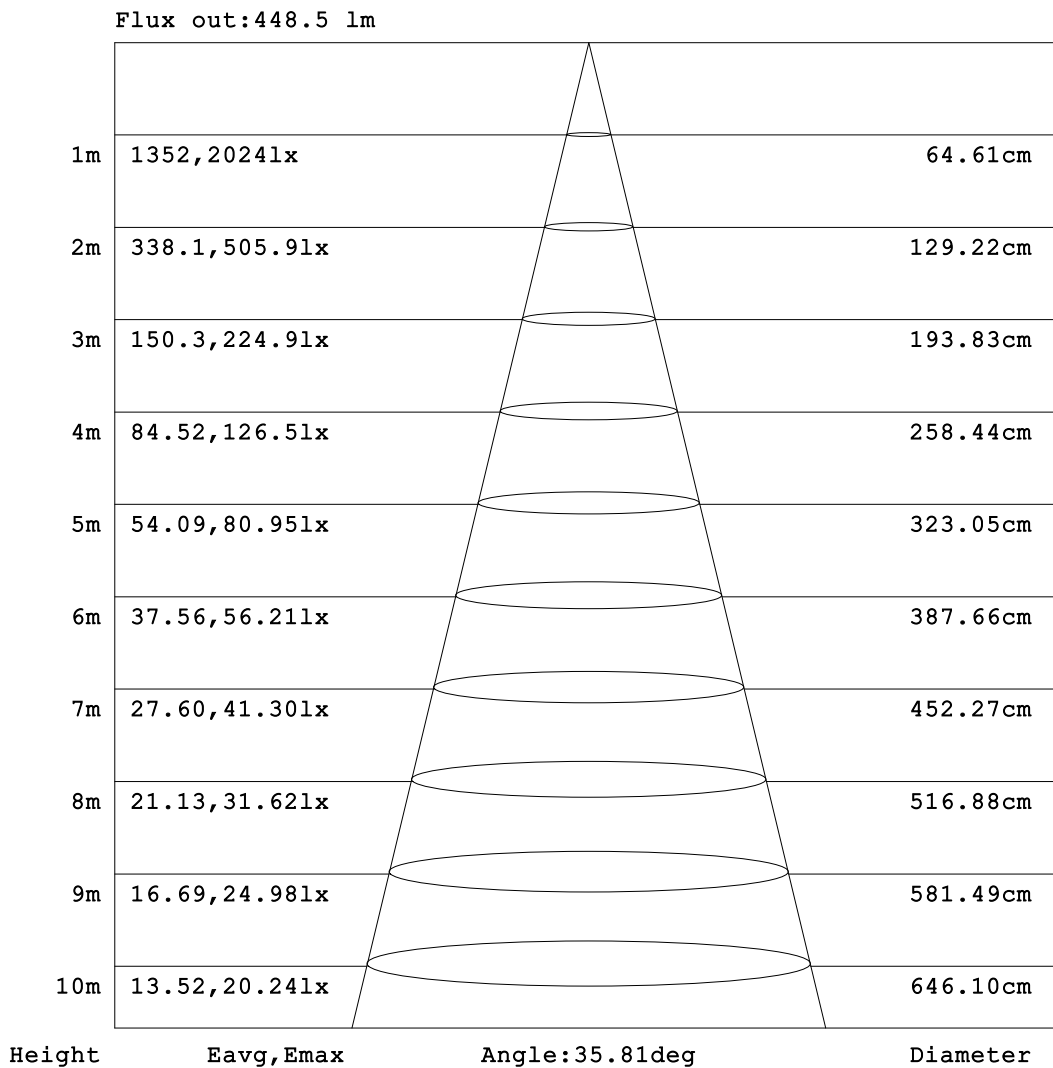


C Range: 0 - 360DEG
 C Interval: 22.5DEG
 Test Speed: HIGH
 Temperature:24.3 °C
 Operators:
 Test Date:2024-03-16

γ Range: 0 - 90DEG
 γ Interval: 1.0DEG
 Test System:EVERFINE GO-SPEX500_V1 SYSTEM V2.00.460
 Humidity:65.0%
 Test Distance:3.080m [K=1.0000]
 Remarks:

AAI Figure

Test:U:120.20V I:0.0964A P:11.403W PF:0.9837 Freq:59.98Hz UTHDi:0.00% ITHDi:0.00% KDisp:0 Lamp Flux:1083.11x1 lm		
NAME: LED-2-S11W-5CCT-WH-EY	TYPE:	WEIGHT:
SPEC.: 4000K 90	DIM.:	SERIAL No.:
MFR.: LTS	SUR.:	Shielding Angle:



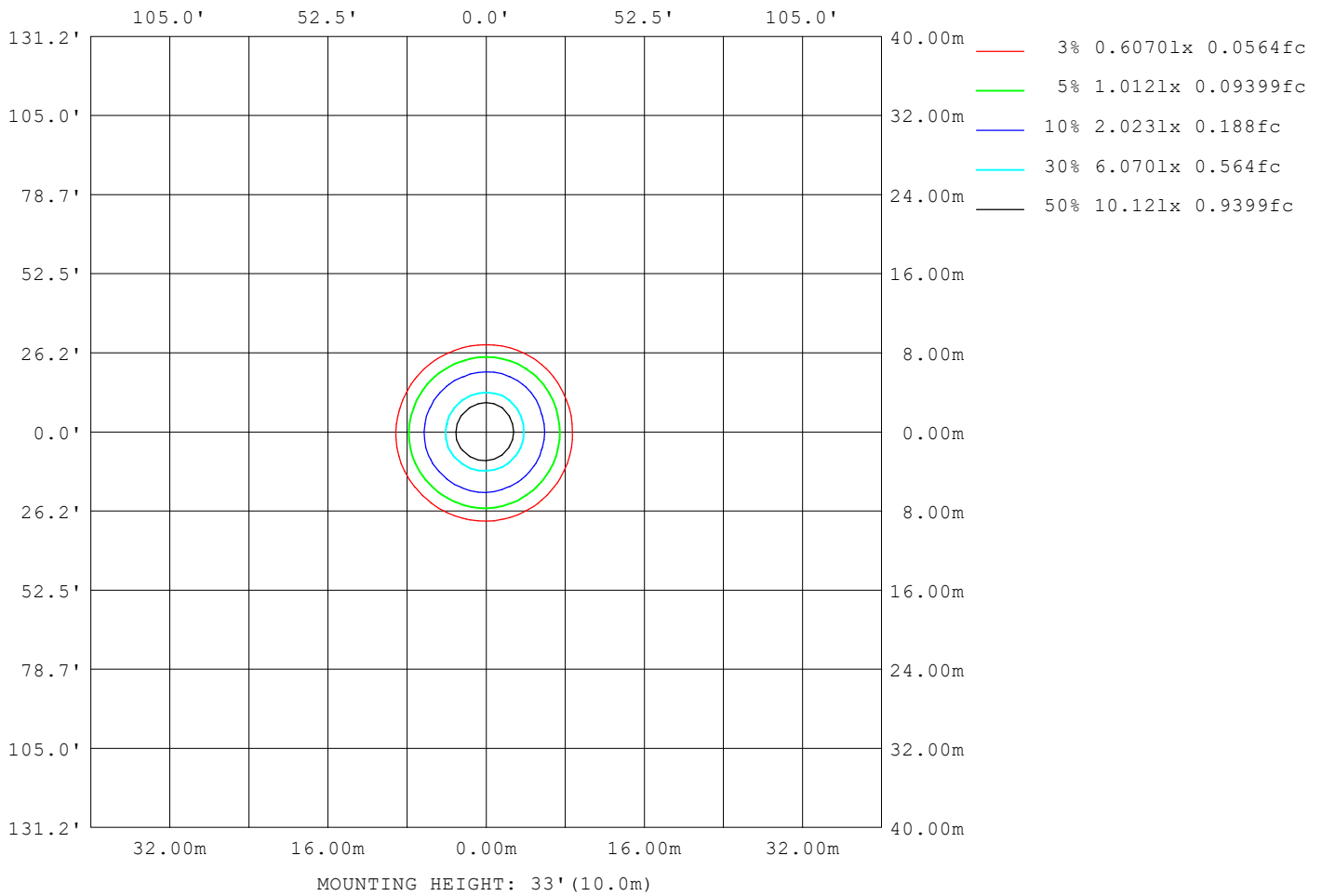
Note: The Curves indicate the illuminated area and the average illumination when the luminaire is at different distance.

C Range: 0 - 360DEG
 C Interval: 22.5DEG
 Test Speed: HIGH
 Temperature: 24.3 °C
 Operators:
 Test Date: 2024-03-16

γ Range: 0 - 90DEG
 γ Interval: 1.0DEG
 Test System: EVERFINE GO-SPEX500_V1 SYSTEM V2.00.460
 Humidity: 65.0%
 Test Distance: 3.080m [K=1.0000]
 Remarks:

ISOLUX DIAGRAM

Test:U:120.20V I:0.0964A P:11.403W PF:0.9837 Freq:59.98Hz UTHDi:0.00% ITHDi:0.00% KDisp:0 Lamp Flux:1083.11x1 lm		
NAME: LED-2-S11W-5CCT-WH-EY	TYPE:	WEIGHT:
SPEC.: 4000K 90	DIM.:	SERIAL No.:
MFR.: LTS	SUR.:	Shielding Angle:



C Range: 0 - 360DEG
 C Interval: 22.5DEG
 Test Speed: HIGH
 Temperature:24.3°C
 Operators:
 Test Date:2024-03-16

γ Range: 0 - 90DEG
 γ Interval: 1.0DEG
 Test System:EVERFINE GO-SPEX500_V1 SYSTEM V2.00.460
 Humidity:65.0%
 Test Distance:3.080m [K=1.0000]
 Remarks:

LED Avg.L Report

Test:U:120.20V I:0.0964A P:11.403W PF:0.9837 Freq:59.98Hz UTHDi:0.00% ITHDi:0.00% KDisp:0 Lamp Flux:1083.11x1 lm		
NAME: LED-2-S11W-5CCT-WH-EY	TYPE:	WEIGHT:
SPEC.: 4000K 90	DIM.:	SERIAL No.:
MFR.: LTS	SUR.:	Shielding Angle:

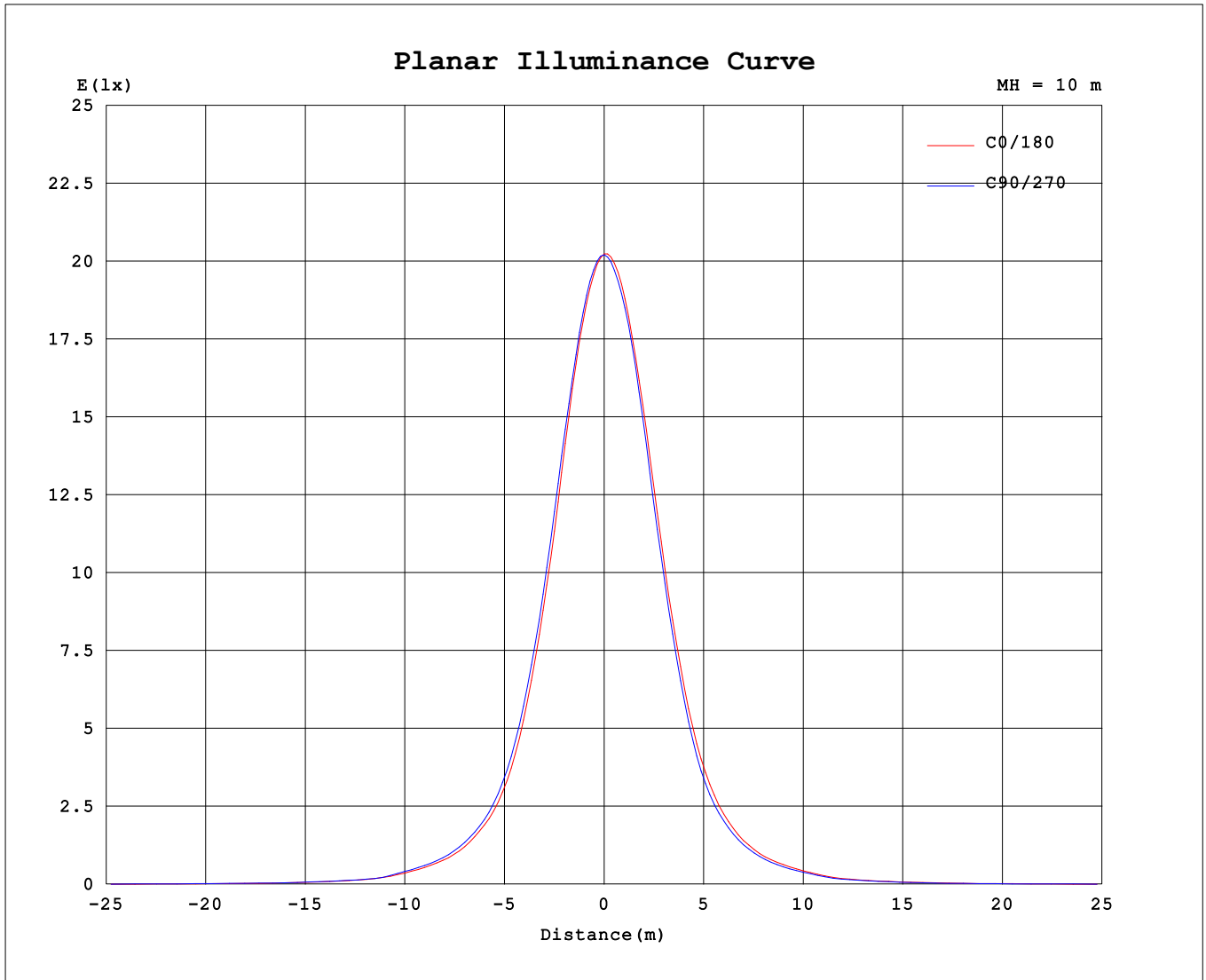
AvgL	cd/m2
L_0~180 (65) av	398
L_0~180 (75) av	250
L_0~180 (85) av	29
L_90~270 (65) av	426
L_90~270 (75) av	275
L_90~270 (85) av	229
L_45 (65) av	421
L_45 (75) av	264
L_45 (85) av	67

Standard: GB/T 29293-2012

C Range: 0 - 360DEG
 C Interval: 22.5DEG
 Test Speed: HIGH
 Temperature:24.3℃
 Operators:
 Test Date:2024-03-16

γ Range: 0 - 90DEG
 γ Interval: 1.0DEG
 Test System:EVERFINE GO-SPEX500_V1 SYSTEM V2.00.460
 Humidity:65.0%
 Test Distance:3.080m [K=1.0000]
 Remarks:

Planar Illuminance Curve



C Range: 0 - 360DEG
 C Interval: 22.5DEG
 Test Speed: HIGH
 Temperature: 24.3 °C
 Operators:
 Test Date: 2024-03-16

γ Range: 0 - 90DEG
 γ Interval: 1.0DEG
 Test System: EVERFINE GO-SPEX500_V1 SYSTEM V2.00.460
 Humidity: 65.0%
 Test Distance: 3.080m [K=1.0000]
 Remarks:

LUMINOUS DISTRIBUTION INTENSITY DATA

Test:U:120.20V I:0.0964A P:11.403W PF:0.9837 Freq:59.98Hz		
UTHDi:0.00% ITHDi:0.00% KDisp:0 Lamp Flux:1083.11x1 lm		
NAME: LED-2-S11W-5CCT-WH-EY	TYPE:	WEIGHT:
SPEC.: 4000K 90	DIM.:	SERIAL No.:
MFR.: LTS	SUR.:	Shielding Angle:

Table--1

UNIT: cd

C (DEG) \ γ (DEG)	0	22.5	45	67.5	90	112.5	135	157.5	180	202.5	225	247.5	270	292.5	315	337.5			
0	2019	2019	2019	2019	2019	2019	2019	2019	2019	2019	2019	2019	2019	2019	2019	2019			
5	1883	1889	1894	1910	1911	1918	1935	1956	1945	1929	1918	1910	1916	1916	1902	1880			
10	1572	1581	1591	1614	1614	1643	1673	1708	1690	1668	1654	1644	1652	1643	1614	1565			
15	1159	1170	1186	1210	1225	1263	1300	1344	1319	1286	1275	1258	1262	1262	1238	1168			
20	788	799	815	839	848	878	909	945	928	903	893	875	875	880	860	801			
25	500	507	521	539	551	568	590	615	605	587	572	558	553	564	552	511			
30	325	330	338	346	357	371	384	397	389	376	365	354	352	360	355	331			
35	220	225	231	238	245	252	259	266	256	249	242	233	232	236	233	221			
40	153	156	161	167	170	173	175	179	175	170	166	159	158	160	159	153			
45	103	107	111	115	118	122	123	126	123	119	116	112	111	111	110	102			
50	60.7	61.0	61.2	61.8	62.1	64.3	67.2	71.3	71.4	70.2	68.8	65.7	64.8	65.3	64.6	61.4			
55	42.4	43.4	44.0	44.8	45.0	46.1	47.3	49.2	49.5	48.8	47.2	44.9	44.8	44.2	43.2	41.7			
60	28.0	28.7	29.4	30.3	30.6	31.3	31.6	31.2	31.0	31.3	30.3	29.1	29.0	28.5	27.9	27.3			
65	18.1	18.5	19.2	20.0	20.5	21.1	21.1	19.3	19.3	20.9	20.5	19.5	19.5	19.0	18.3	17.7			
70	9.66	9.45	10.4	10.8	11.1	11.2	11.1	9.59	9.62	10.7	11.2	10.9	10.7	10.5	10.2	9.83			
75	7.19	7.24	7.43	7.81	7.80	7.64	7.36	7.37	7.21	7.29	7.66	7.97	8.04	8.00	7.89	7.46			
80	3.62	3.81	4.33	5.19	5.53	5.00	4.40	4.13	3.89	4.02	4.56	5.17	5.54	5.35	4.77	3.97			
85	0.15	0.15	0.56	1.77	2.34	1.64	0.83	0.55	0.41	0.43	0.71	1.45	2.09	1.42	0.49	0.15			
90	0.08	0.08	0.08	0.08	0.10	0.08	0.08	0.08	0.07	0.06	0.06	0.07	0.07	0.07	0.06	0.06			

C Range: 0 - 360DEG
 C Interval: 22.5DEG
 Test Speed: HIGH
 Temperature:24.3°C
 Operators:
 Test Date:2024-03-16

γ Range: 0 - 90DEG
 γ Interval: 1.0DEG
 Test System:EVERFINE GO-SPEX500_V1 SYSTEM V2.00.460
 Humidity:65.0%
 Test Distance:3.080m [K=1.0000]
 Remarks: